

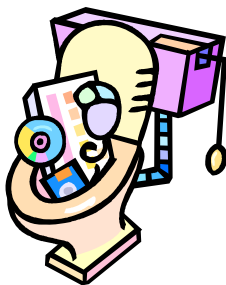
KEEP YOUR WASTEWATER LINES OPEN

Have you seen the television commercial where a harried father is putting a cranky toddler to bed when he hears the toilet flush and another toddler says “uh oh”? Well, it is challenging to keep children from flushing items that were not intended to get into the waste lines. However, it is not just children who create problems.

Here is a list of items that should never be flushed down a toilet.

Dental Floss	Tooth Picks	Q-tips
Diapers (adult and child)	Hair	Toys
Jewelry	Band Aids	Toilet Sponges
Sponges	Rags	Baby Wipes
Shower Caps	Make-up Applicator	Sanitary Napkins
Tampax Applicators	Condoms	Condom Wrappers
Contraceptive Devices	Plastic	Rubber Bands
Newspaper	Unused Medications	Toothbrushes
Plastic Cups	Personal-Care Products	Paper Cups
Household Cleaning Products		

When in doubt, please trash it.



DO NOT FLUSH IT!